



Product introduction

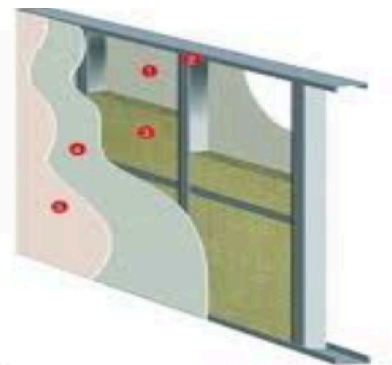
Huali rock wool is a semi-rigid basalt wool slab insulation for interior walls. Interior wall is a light weight wall with decorative effect, non-bearing and consists of finishing panel and supporting structure system. It is widely used in various commercial and public buildings. with the functions of light weight, convenient installation, anti-wind pressure, rainproof, heat insulation, sound absorption and noise reduction.

Product performance

- Good insulation effect and fireproof performance
- Non-flammable, A1 grade. Fire rate is not affected and limited from the height of building.
- Better permeability, "berathing" the system.
- Higher compressive and tensile strength, make sure the using safety.
- Sound absorption, noise reduction
- Excellent hydrophobic performance, stable fiber structure, easy to cut and install
- Asbestos free, non-toxic

Lightweight steel keel partition wall system

Lightweight steel keel partition system is a non-load-bearing system which is fixed on the lightweight steel keel with gypsum board and filled with Huali rock wool board. It can be used as the non-bearing partition wall, with performance of light weight, sound insulation effect, excellent fire performance, convenient construction etc., is the most widely used for partition system.



Product type	Thickness	Size
HLY IWSL45k	50-150mm	1200*600mm
HLY IWSL50k	50-150mm	1200*600mm
HLY IWSL60k	50-150mm	1200*600mm
HLY IWSL65k	50-150mm	1200*600mm
Facing finish	Aluminum foil, glass fiber cloth etc	

Curtain wall fire insulation system

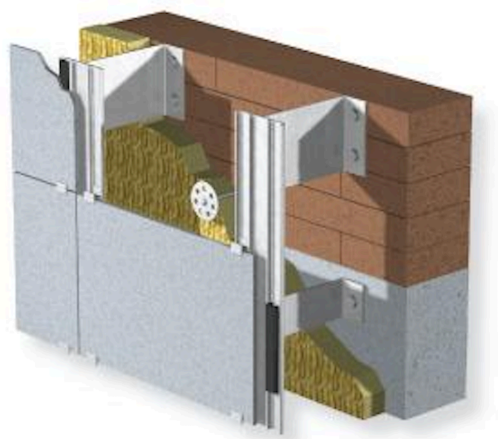
Curtain wall fire protection insulation system refers to the fire resistant which stops fire and smoke from penetrating through construction structures in curtain wall systems. The system can protect curtain walls with good thermal insulation and excellent fire performance. It is used for building curtain wall structure including curtain wall fire sealing and curtain wall windowsill wall.



	HLY IWSL60F	HLY IWSL80F	HLY IWSL100F	HLY IWSL110F
Density	60 kg/m ³	80 kg/m ³	100 kg/m ³	110 kg/m ³
Thickness	50-135 mm	50-135 mm	50-100 mm	50-100 mm
Length * width	1200 * 600mm			
Facing finish	Aluminum foil, glass fiber cloth etc			

Ventilated facade insulation system

Ventilated facade insulation system refers to non-transparent curtain wall system with stone wool as its insulation material installed between the facade and a solid substrate such as concrete wall or brick wall to which the stone wool is mechanically fixed. It is suitable for both new buildings and energy saving projects. It can also be applied to multiple building structures, such as frame and masonry.



Type	Density	Thickness	L * W
HLY IWSL100v	100 kg/m ³	50-150 mm	1200 * 600mm
HLY IWSL80v	80 kg/m ³	50-150 mm	1200 * 600mm
Facing finish	Aluminum foil, glass fiber cloth, etc		

Technical Data

Item Name	Specification	Unit
Factor of heat conduction (Temperature 25°C)	≤0.040	W/m.k
Combustion performance	non-inflammable,A0	-
Hydrophobic coefficient	≥98	%
Water absorption coefficient	≤0.2	%
Dimensional stability	≤1.0	%
Acidity coefficient	≥1.6	-
Melting temperature	> 1000	°C
Service temperature	≤650	°C
Average diameter of fiber	≤7.0	um

