

Product Introduction

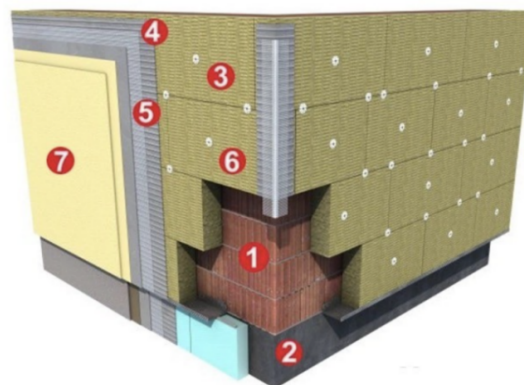
Huali rock wool products are made from natural rock such as basalt and dolomite. The natural rock are melted into melts in cupola at a very high temperature about 1500°C. And the melts lava is then pour to high speed spinners through which the melts get into fibers. At the same time, the phenolic binder containing silicon and mineral oil etc are sprayed onto the surface of each fiber homogeneously.

Exterior wall insulation system consist of two applications: typical structure and steel structure. Both of the rock wool board is hydrophobic and sound reduction to avoid the moisture and noise effect.



Typical structure exterior wall system

Exterior wall insulation thin plastering system is a kind of non-bearing insulation structure, consists of insulation layer, protective layer, fixed materials (adhesives, auxiliary fixings, etc.), and is fixed in the external surface of exterior wall, with performance of fire safety, heat insulation, waterproof, anti-cracking, anti-wind pressure and durability.



Performance

- Good insulation effect, avoid hot and cold Bridges
- Non-flammable, A1 grade. Fire rate is not affected and limited from the height of building.
- Better permeability, "berathing" the system.
- Higher compressive and tensile strength, make sure the using safety.
- Sound absorption, noise reduction
- Excellent hydrophobic performance, stable fiber structure, easy to cut and install
- Asbestos free, non-toxic

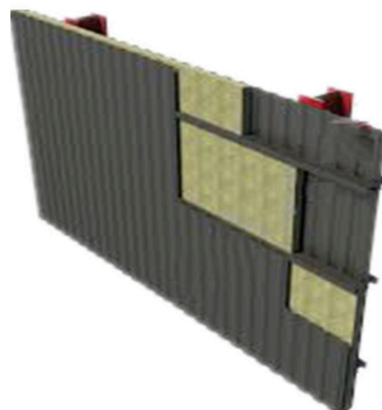
Specification

Product type	Thickness	Size
HLY EWSL120t	35-150mm	1200*600mm
HLY EWSL130t	40-130mm	1200*600mm
HLY EWSL140t	25-120mm	1200*600mm
HLY EWSL150t	25-120mm	1200*600mm
HLY EWSL160t	25-110mm	1200*600mm
Facing finish	Aluminum foil,glass fiber cloth etc	



Steel structure exterior wall system

Advantage: quick construction, good structural performance, seismic performance, large using area. Huali rock wool board can be filled into the wall frame of light steel structure, to ensure the fire prevention, sound reduction, heat insulation etc. of the whole system, which is one of the best supporting materials for light steel structure.



Performance

- Non-flammable, A1 grade, no release toxic volatiles and flue gas
- Low thermal conductivity, to reduce the energy consumption, energy saving.
- Excellent breathable performance, to timely spread the moisture of indoor and wall
- Sound absorption, noise reduction
- No corrosion to the metal material and building structure
- Asbestos free, non-toxic

Specification

Product type	Thickness	Size
HLY EWSL60s	50-150mm	1200*600mm
HLY EWSL80s	50-150mm	1200*600mm
HLY EWSL100s	40-150mm	1200*600mm
HLY EWSL110s	40-150mm	1200*600mm
HLY EWSL120s	40-150mm	1200*600mm
HLY EWSL130s	35-130mm	1200*600mm
HLY EWSL140s	30-120mm	1200*600mm
Facing finish	Aluminum foil,glass fiber cloth etc	





Technical Data

Item Name	Specification	Unit
Tensile strength	≥ 7.5	Kpa
Compression strength	≥ 40	Kpa
Factor of heat conduction (Temperature 25°C)	≤ 0.040	W/m.k
Combustion performance	non-inflammable,A0	-
Hydrophobic coefficient	≥ 98	%
Water absorption coefficient	≤ 0.2	%
Dimensional stability	≤ 1.0	%
Acidity coefficient	≥ 1.6	-
Melting temperature	> 1000	°C
Service temperature	≤ 650	°C
Average diameter of fiber	≤ 7.0	um

